

## Tafel 28

- B273 *Pyrois cinnamomea* (GOEZE, 1781)  
B273: leg., ex ovo BECK, fot. BODI, iv.–vi. 1981: CH – VS – Raron, 600 m.
- B274 *Adpyramidcampa effusa* (BOISDUVAL, [1828])  
B274a: fl. *normalis*, leg., fot. BECK, an *Ferula*, A iv.–M. iv. 1985: Türkei – W-Küste – Ephesus.  
B274b: fl. *inpurpurata*, leg., fot. NIPPE, v. 1986, det. BECK: YU – Istrien.  
B274c: fl. *latalineata*, leg., fot. BECK, an *Ferula*, A. iv.–M. iv. 1985: Türkei – W-Küste – Ephesus.
- B275 *Pyramidcampa (Pyramidcampa) pyramidea* (LINNAEUS, 1758)  
B275: leg., fot. DEUTSCH, det. BECK, vi. 1987: A – O-Tirol – Lengberg.
- B276 *Pyramidcampa (Pyramidcampa) berbera* (RUNGS, 1949)
- B276a *Pyramidcampa (Pyramidcampa) berbera* ssp. *berbera* (RUNGS, 1949)  
B276a: Reprofoto, leg. PINKER, ex ovo, fot. KOBES, 1973/74: Marokko – Hoher Atlas – Okaim'den.
- B276b *Pyramidcampa (Pyramidcampa) berbera* ssp. *svenssoni* (FLETCHER, 1968)  
B276b: leg. KRISTAL, ex ovo BECK, fot. BODI 1978/79: D – H – Bürstadt.  
B276b': leg., fot., DEUTSCH, det. BECK, vi. 1987: A – O-Tirol – Lengberg.
- B277 *Pyramidcampa (Obtuscampa) perflua* (FABRICIUS, 1787)  
B277: leg.?, fot. BODI: D – Bay – Kochelsee.
- B278 *Cucullia absinthii* (LINNAEUS, 1761)  
B278: leg., fot. BODI: D – Hamburg-Boberg.
- B279 *Cucullia argentea* (HUFNAGEL, 1766)  
B279: leg., det. BODI, ix. 1969: D – S-H – vic Lübeck.
- B279x *Cucullia magnifica* FREYER, 1839  
B279x: aus RONKAY & RONKAY (1994: plate 9, fig. 2): Caucasus – Checheno – Ingousetia – Furtoug, fot. L. RONKAY.
- B279y *Cucullia splendida* (STOLL, 1782)  
B279y: VL-Stadium, Raupe do total, die rostigen Verfärbungen am Hinterende und lat sind wohl Verfärbungen an der toten Raupe, leg., ex ovo, fot. AHOLA, 1997: Russia – Chelyabinsk – Nikolavska – Ajat-river.  
B279y': VL-Stadium, S1–S3 do, leg., ex ovo, fot. AHOLA, 1997: Russia – Chelyabinsk – Nikolavska – Ajat-river.
- B280 *Cucullia praecana* EVERSMAANN, 1843  
B280: leg., fot. P. St. NIELSEN, M viii. 1983: DK – NEZ – Praesö.
- B281 *Cucullia artemisiae artemisiae* (HUFNAGEL, 1766)  
B281: leg., fot. BODI, ix. 1972: D – Hamburg-Boberg.
- B282 *Cucullia artemisiae cineracea* FREYER, 1842  
B282: leg., fot. PETIT, ix. ?1982: F – Hts. Alpes – Eyglers.
- B283 *Cucullia fraudatrix* EVERSMAANN, 1837  
B283: leg., fot. BODI, viii. 1969: D – NS – vic Braunschweig.



B273



B274a



B274b



B274c



B275



B276a



B276b



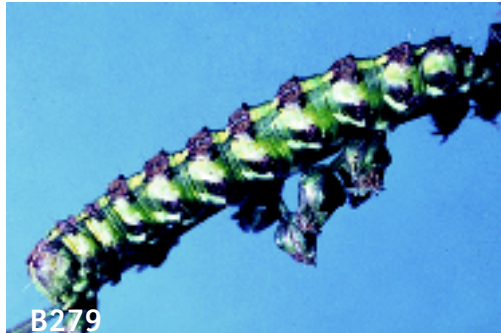
B276b'



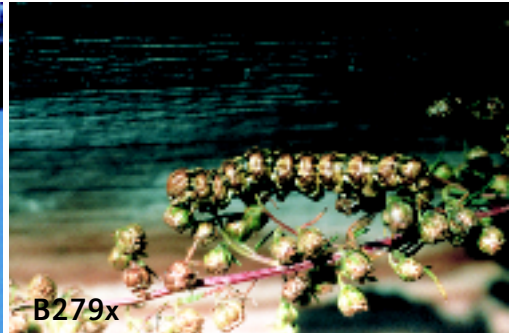
B277



B278



B279



B279x



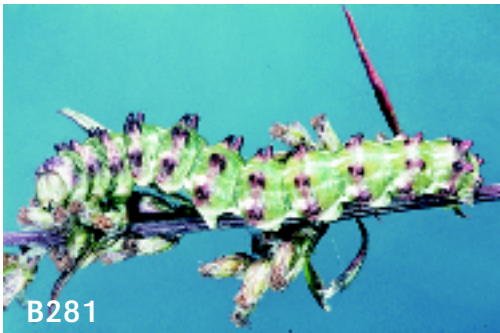
B279y



B279y'



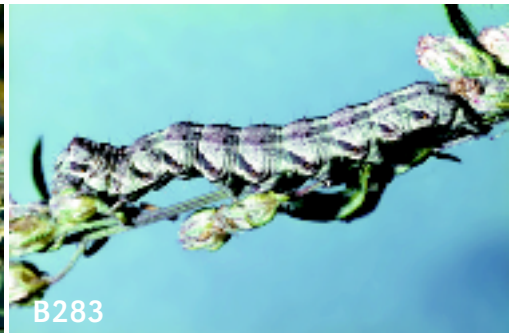
B280



B281



B282



B283