

Tafel 32

B304 *Shargacucullia (Shargacucullia) lanceolata* (DE VILLERS, 1789)

B304: dunklere Form, leg., fot. BODI, vi. 1982: E – Katal – Gerona – Vidreras – Puig Ventós.

B304': helle Form, leg., fot. BODI, 1975: E – O-Pyrenäen – Seo de Urgel – Rio de Tost.

B304'': LL-Larve (links unten eine Form von *S. lychnitis*), leg. BLÄSIUS, fot. BECK, 10. vii. 1975: A – Bgld – Jois – Hackelsberg.

B305 *Shargacucullia (Shargacucullia) caninae* RAMBUR, 1833

B305a *Shargacucullia (Shargacucullia) caninae* ssp. *caninae* RAMBUR, 1833

B305a: fl. *normalis* (provisor. Benennung), leg., fot. BODI, vi. 1975: E – Katal – vic Figueras.

B305a': fl. *nielseni* fl. nov., leg., fot. NIELSEN, 1985: E – Canar. Inseln – Gran Canaria – Orotavia.

B305a'': fl. *canariensis* PINKER, leg., fot. NIELSEN, 1985: E – Canar. Inseln – Gran Canaria – Orotavia.

B305b *Shargacucullia (Shargacucullia) caninae* ssp. *erythrocephala* WAGNER, 1914

B305b: leg., fot. STÜNING, iv. 1975: E – Andal – Benalmadena.

B305b': leg. KOSCHWITZ, fot. BECK, M vi. 1994: E – Andal – Sra. Nevada – Sra. Alpajarras.

B305b'': leg. KOSCHWITZ, fot. BECK, M vi. 1994: E – Andal – Sra. Nevada – Sra. Alpajarras.

B305b''': leg. KOSCHWITZ, fot. BECK, M vi. 1994: E – Andal – Sra. Nevada – Sra. Alpajarras.

B305b''': leg. KOSCHWITZ, fot. BECK, M vi. 1994: E – Andal – Sra. Nevada – Sra. Alpajarras.

B305c *Shargacucullia (Shargacucullia) caninae ?caninae* oder *caninae ?erythrocephala*: Übergangsformen zwischen beiden Subspezies oder unklare Zuordnungen.

B305c: leg. KOSCHWITZ, M vi. 1996, fot. BECK: Marokko – Hoher Atlas – Paß Tizientest, 2000 m.

B305c': aus YELA (1992), Do-Ansicht, fot. GÓMEZ DE AIZPÚRUA, die obere Raupe leg., ex ovo PETIT: F – Hts. Alpes – Aspres; die untere Raupe leg. YELA: E – Cuenza – Beteta.

B305c'': aus YELA (1992), Lat-Ansicht, fot. GÓMEZ DE AIZPÚRUA, die obere Raupe leg., ex ovo PETIT: F – Hts. Alpes – Aspres; die untere Raupe leg. YELA: E – Cuenza – Beteta.

B306 *Shargacucullia (Shargacucullia) blattariae* (ESPER, [1790])

B306a *Shargacucullia (Shargacucullia) blattariae* ssp. *blattariae* (ESPER, [1790])

B306a: leg. BECK, fot. NIPPE, iv. v. 1984: GR – Kreta – Ida-Geb. – Gonies.

B306a': leg., fot. DEUTSCH, vi. 1988: I – N-I – Lessin. Alpen – S. Ambrogio.

B306b *Shargacucullia (Shargacucullia) blattariae* fl. *eugeniae* BECK, 1989

B306b: leg. BECK, fot. NIPPE, iv. v. 1984: GR – Kreta – Ida-Geb. – Gonies.

B307 *Shargacucullia (Shargacucullia) blattariae* ssp. *scrophulariphaga* RAMBUR, 1833

B307: leg., fot. SCHNEIDER, E v. 1997: Korsika.



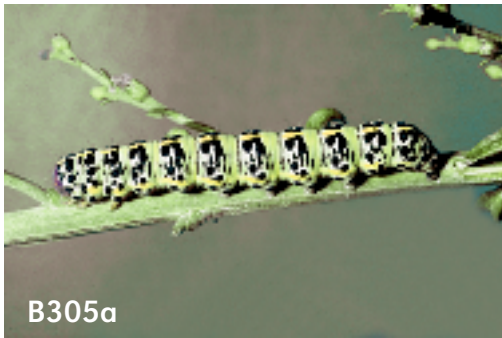
B304



B304'



B304''



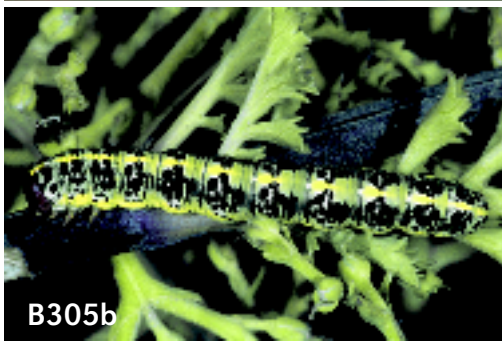
B305a



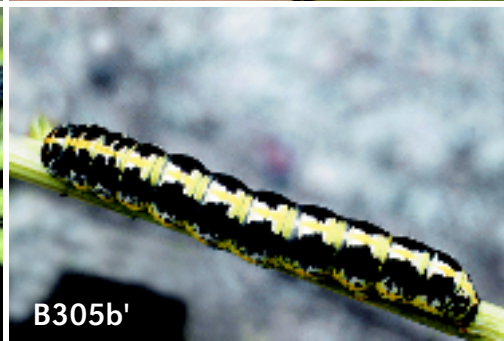
B305a'



B305a''



B305b



B305b'



B305b''



B305b'''



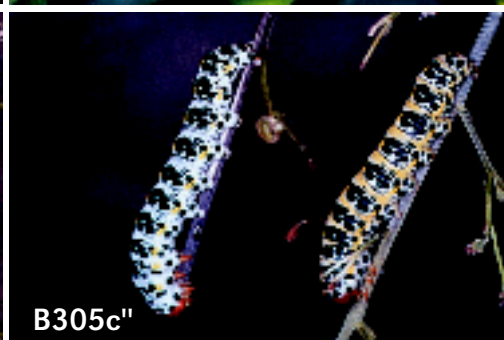
B305b''''



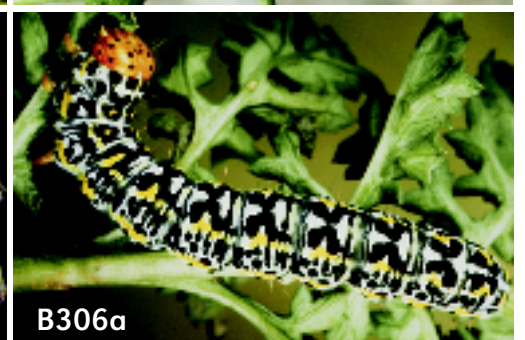
B305c



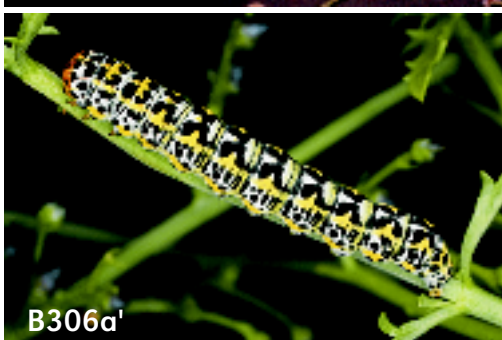
B305c'



B305c''



B306a



B306a'



B306b



B307